

SOLAR ROAD STUD

MODEL CF-S-100

Application

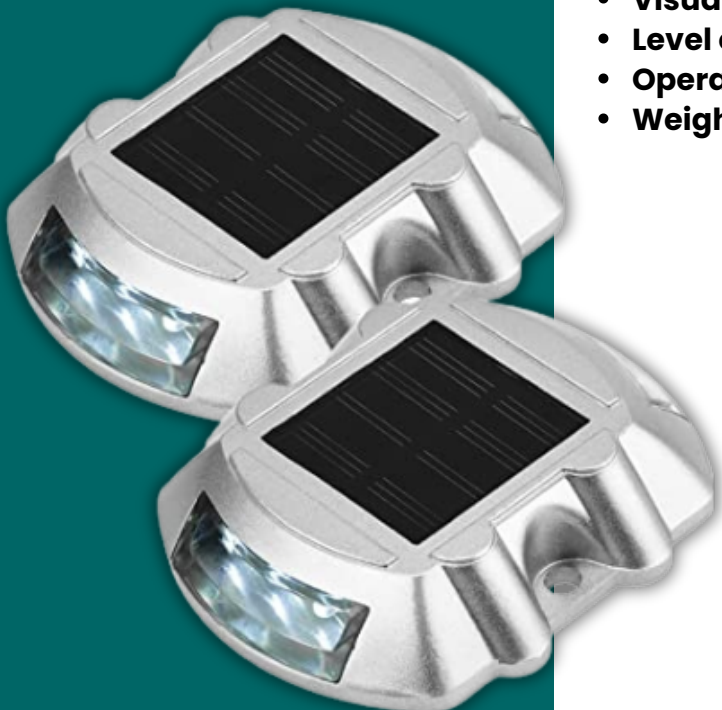
The model CF-S-100 Solar road stud is suitable for low and medium speed road warning lanes.

According to the actual road conditions, a single, continuous product or multiple, combined products can be selected for installation on the road pavement on either one or both sides.

At night, its signaling function provides motor vehicle drivers with orientation instructions, as well as non-motorized vehicle drivers and pedestrians. In this way, it greatly improves road safety at night.

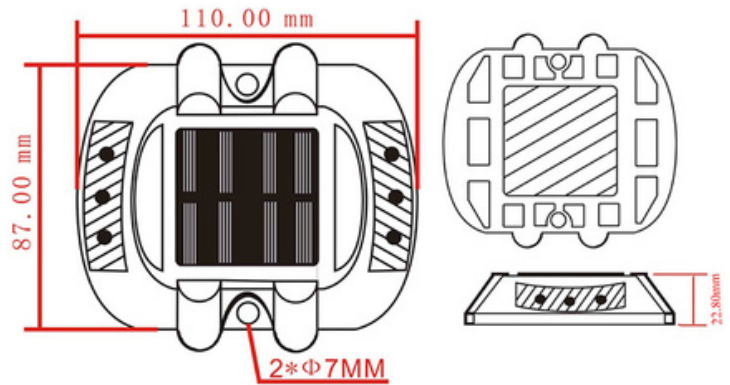
Technical specifications

- **Dimensions:** 110 x 97 x 22,8 mm.
- **Solar Panel:** 2V / 100 MA (Monocrystalline Silicon).
- **Ni-mh battery:** 1.2V/600MAH High Temperate NI-MH Battery.
- **LED quantity:** 6 pcs.
- **LED frequency:** Flashing 90 times per minute.
- **LED Colour:** Red, yellow, white, blue and green.
- **Luminous intensity:** 12000mcd-20000mcd.
- **Lighting time:** 100h after fully charged.
- **Material:** Aluminum + PC part, UV resistant.
- **Visual distance:** >1000 meters.
- **Level of protection:** IP68
- **Operating temperature:** -20°C to +80 °C.
- **Weight resistance:** >20 Tons.



SOLAR ROAD STUD

MODEL CF-S-100



Installation

- Check whether the solar panel is charging and discharging normally.
- Identify the site for installation.
- Clean road surfaces
- Clean the underside of the solar hood and use epoxy glue to glue it to the ground.
- Wait 8 hours to dry before activating the solar collector.

